

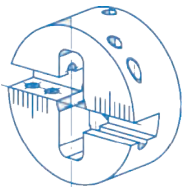
# PORTE-OUTILS DE LA GAMME

## pour chanfreineuse de tube serrage interne

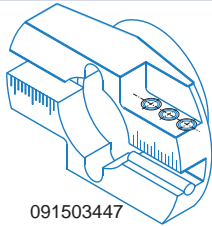
### MF2iw

### MF3iw

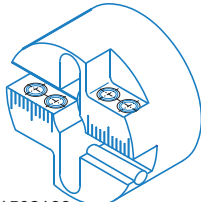
### MF3i



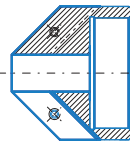
091505328  
Porte-outils de la  
gamme - special  
Plage de travail :  
ID 11 - OD 28 mm



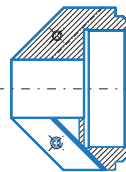
091503447  
Porte-outils de  
la gamme  
Plage de travail :  
ID 25 - OD 114,3 mm



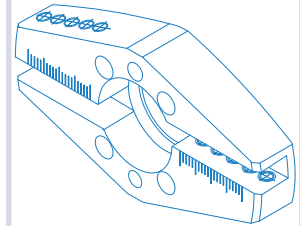
091502166  
Porte-outils de  
la gamme  
Plage de travail :  
ID 16 - OD 62 mm



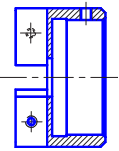
010007080  
Porte-outils de  
la gamme 45°  
(ID 16 - OD 56 mm)



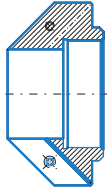
010007079  
Porte-outils de  
la gamme 45°  
(ID 25 - OD 66 mm)



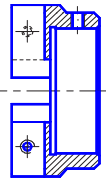
09152139  
Porte-outils de la gamme  
pour fourreaux 2  
Plage de travail :  
ID 40 - OD 168 mm



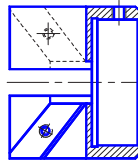
091505347  
Porte-outils de la  
gamme 0°  
(ID 11 - OD 28 mm)



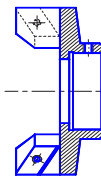
091501107  
Porte-outils de  
la gamme 45°  
(ID 40 - OD 82 mm)



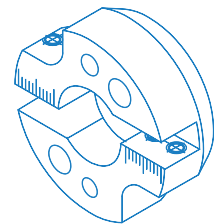
091501113  
Porte-outils de  
la gamme 0°  
(ID 16 - OD 56 mm)



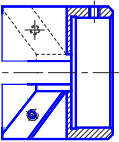
091501101  
Porte-outils de  
la gamme 30°  
(ID 16 - OD 50 mm)



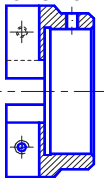
091501112  
Porte-outils de  
la gamme 30°  
(ID 70 - OD 103 mm)



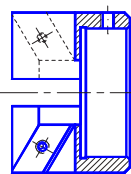
091502144  
Porte-outils de la gamme  
pour fourreaux 1  
Plage de travail :  
ID 25 - OD 84 mm



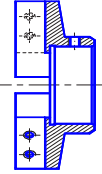
091505348  
Porte-outils de la  
gamme 30°  
(ID 11 - OD 28 mm)



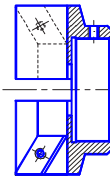
091501114  
Porte-outils  
de la gamme 0°  
(ID 25 - OD 64 mm)



091501102  
Porte-outils de  
la gamme 30°  
(ID 25 - OD 58 mm)



091501104  
Porte-outils de  
la gamme 0°  
(ID 25 - OD 58 mm)

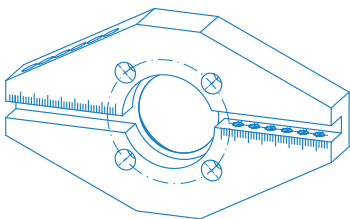


091501103  
Porte-outils de  
la gamme 30°  
(ID 40 - OD 78 mm)

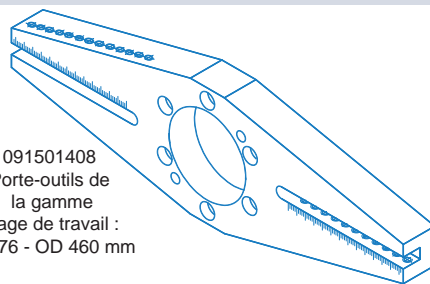
### MF4i

### MF5i

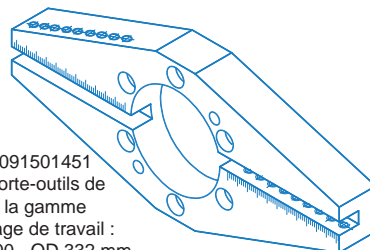
### MF6i-50



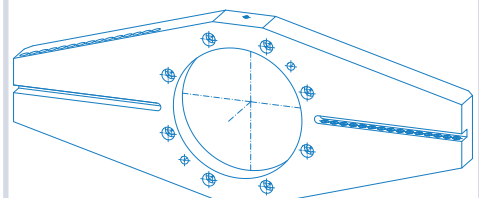
091505605  
Porte-outils de la gamme  
Plage de travail :  
ID 58 - OD 219,1 mm



091501408  
Porte-outils de  
la gamme  
Plage de travail :  
ID 176 - OD 460 mm



091501451  
Porte-outils de  
la gamme  
Plage de travail :  
ID 100 - OD 332 mm



091503168  
Porte-outils de la gamme  
Plage de travail :  
ID 280 - OD 711 mm

Le diamètre extérieur ,OD, indiqué dans la gamme de diamètres de travail est en accordance avec les diamètres des mors de serrage!