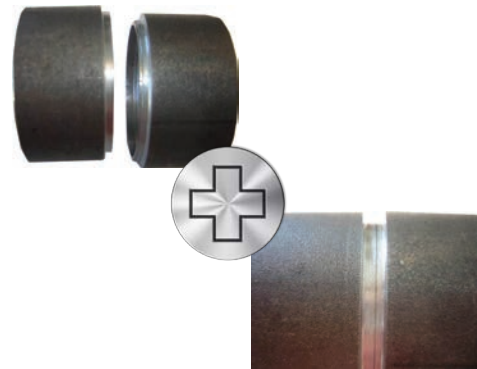
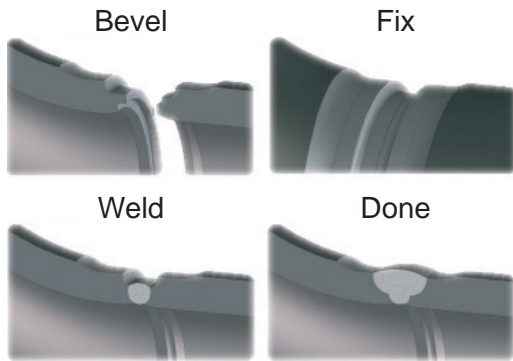
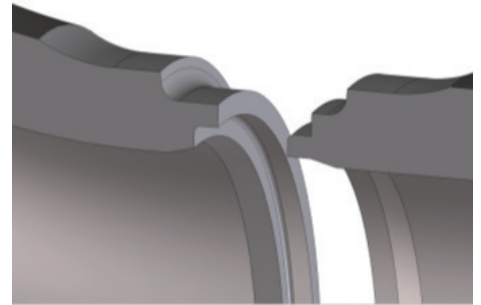




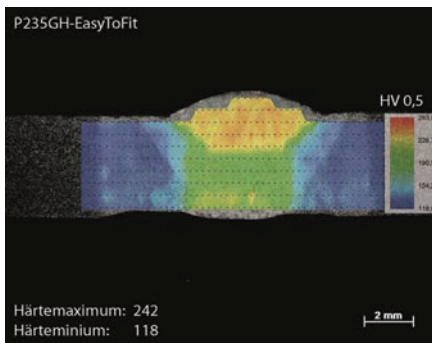
## Mechanized Easy-to-Fit beveling

### Advantages:

- Total cost reduction of 50% in pipe welding process
- Reliable, repeatable, independent from workers qualification
- Reduction of pressure loss at the inside of pipe
- Mechanical centering, no pipe welding clamps needed
- Perfect prep for automatic orbital welding



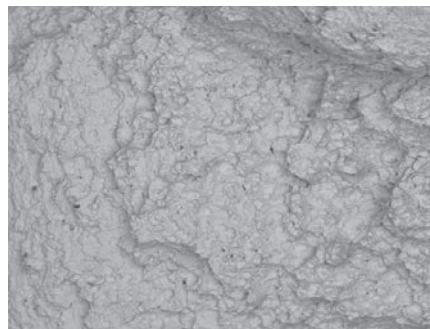
## Analysis from German University and Welding Institute



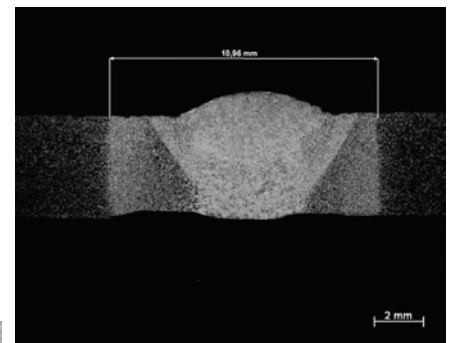
Improved Hardness

### Easy-to-Fit

Improvements by automatic beveling and welding have been proved by IFS and Technical University Chemnitz in Germany



Improved break analysis

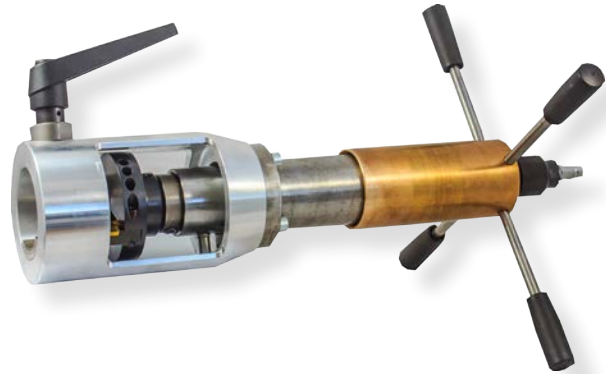


Less heat affected Zone

## Pipe Beveling Machine MF3-EF

Clamping range OD-OD: 20 - 63,5 mm

- Max. Wall thickness: 10 mm
- Min. pipe inside diameter: 36 mm for Easy-to-fit applications
- Materials: steel, stainless steel, duplex, high alloyed
- TiN inserts



### Easy-to-fit advantages

- Reduction of the total cost of producing a weld seam
- No more alignment, pipes are “ready to weld”
- Can be repeated reliable for process stability
- Quality assurance of the weld

Innovations like Easy-to-Fit can only be achieved with close end user contacts and an in-depth understanding of the corresponding application. Together with an Austrian customer who was prepared to take a revolutionary path from the beginning, the innovation was created. Nowadays many DWT customers use this brilliant system with big benefits and increase their competitiveness.

Designed,  
developed and  
made in Germany

